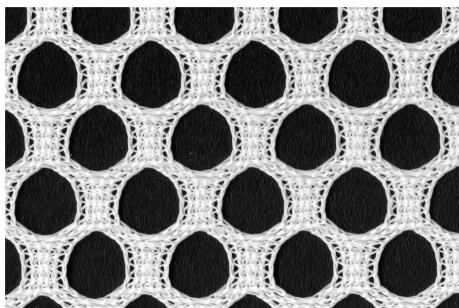


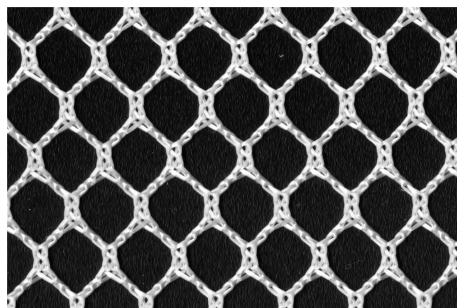
**PES 1**

Yarn: 100 % Polyester  
Weight: appr. 195 g/m<sup>2</sup>  
Heatset: at 200 °C



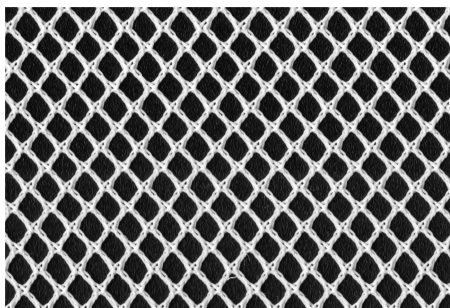
**PES 2**

Yarn: 100 % Polyester  
Weight: appr. 173 g/m<sup>2</sup>  
Heatset: at 200 °C



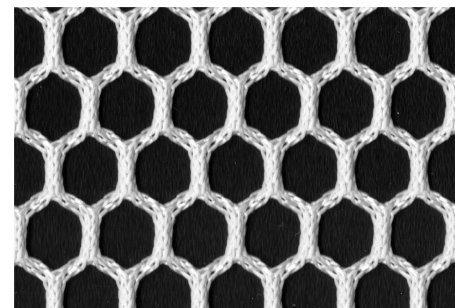
**PES 3**

Yarn: 100 % Polyester  
Weight: appr. 170 g/m<sup>2</sup>  
Heatset: at 200 °C



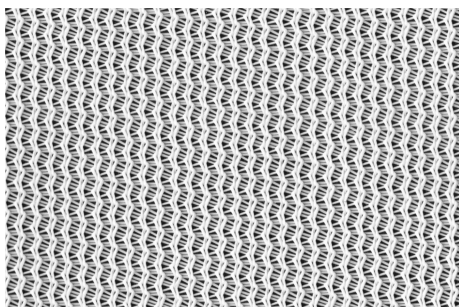
**PES 4**

Yarn: 100 % Polyester  
Weight: appr. 300 g/m<sup>2</sup>  
Heatset: at 200 °C



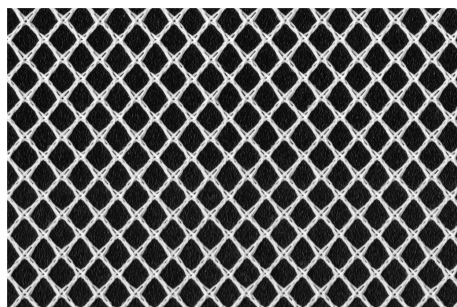
**PES 5**

Yarn: 100 % Polyester  
Weight: appr. 220 g/m<sup>2</sup>  
Heatset: at 200 °C



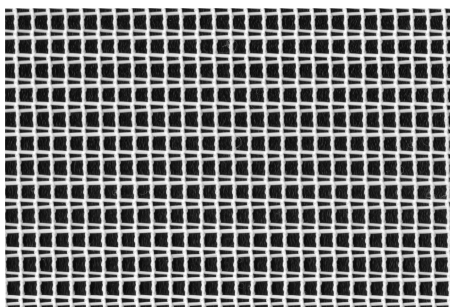
**PES 6**

Yarn: 100 % Polyester  
Weight: appr. 90 g/m<sup>2</sup>  
Heatset: at 200 °C



**PES 7**

Yarn: 100 % Polyester  
Weight: appr. 185 g/m<sup>2</sup>  
Heatset: at 200 °C



**PES 8**

Yarn: 100 % Polyester  
Weight: appr. 215 g/m<sup>2</sup>  
Heatset: at 200 °C

